

IXP- 3W6520/4W6520

Dust/
Splash-
proof
specification

Arm
length
650mm

Vertical
axis
200mm

■Model Specification Items	IXP	<input type="checkbox"/>	W	65	20	WA	<input type="checkbox"/>	P3	<input type="checkbox"/>
	Series	Number of axes 3: 3 axes 4: 4 axes	Type W: Dust/ Splash-proof specification	Arm length 65: 650mm	Vertical axis stroke 20: 200mm	Encoder type WA: Battery-less absolute specification	Cable length 3L: 3m 5L: 5m	Applicable controller P3: MSEL	Option Option below Refer to the price list

*Controller is not included.



*The photograph shows a 4-axis specification.



- Refer to P. 7 for *1 through *8.
- Make sure to select the brake option when the payload is 4kg or more.
- The vertical axis does not support push-motion control.
- The allowable push force should be 90N under condition of having a buffer such as a spring on a tool or the pressing side.
- Refer to P. 7 for the work envelope, and P. 8 for the notes on acceleration/deceleration setting.

Robot Specifications

Axis configuration		Arm length (mm)	Work envelope	Positioning repeatability *1	Maximum operating speed in PTP mode *2	Payload (kg) *3	
						Rated	Maximum
Axis 1	Arm 1	360	±127°	±0.04mm	2314mm/s (Composite speed)	2	6
Axis 2	Arm 2	290	±127°				
Axis 3	Vertical axis	—	200mm	±0.02mm	240mm/s		
Axis 4	Rotational axis	—	±360°	±0.02°	700°/s		

Robot Specifications

	3-axis specification	4-axis specification
Encoder type	Battery-less absolute encoder	
Standard cycle time *4 (sec)	0.93	
Allowable torque (Axis 4) (N·m)	—	3.06
Allowable moment (N·m)	9.4	
Allowable inertial moment from the tip of the vertical axis *5 (kg·m ²)	Rated 0.01 Maximum 0.03	Rated 0.01 Maximum 0.01
Ambient operating temperature/humidity	Temperature 0 ~ 40°C Humidity 20 ~ 85%RH (Non-condensing)	
Unit weight (kg)	27	29
Protection class	IP65	
Piping joint for purge	One touch piping joint Applicable tube O.D. ø6	
Air purge pressure *8	1kPa (Clean dry air)	
Purge flow rate	12Nℓ/min	

Price List (Standard price)

Specification	Model number	Standard price
3-axis specification	IXP-3W6520	—
4-axis specification	IXP-4W6520	—

Cable Length (Standard price) <Per Unit>

Cable code	Standard price
3L (3m)	—
5L (5m)	—

Option price (Standard price)

Name	Option code	Reference page	Standard price
Brake	B	Refer to our ROBO Cylinder General Catalog	—

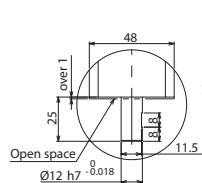
* Make sure to select this when the transported object is 4kg or more.

Dimensions

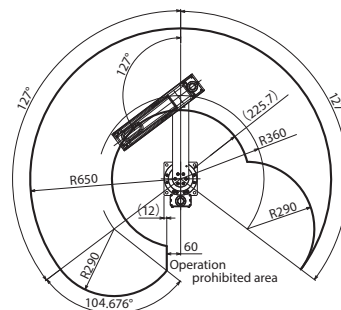
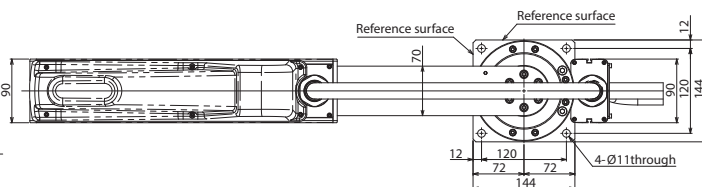


CAD drawings can be downloaded from the website.

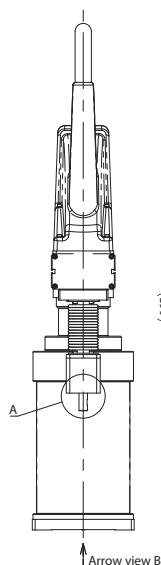
www.intelligentactuator.com



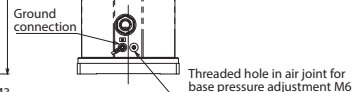
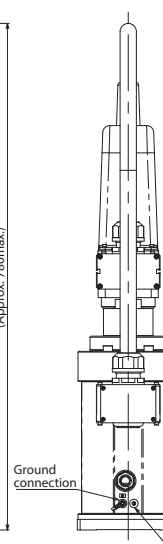
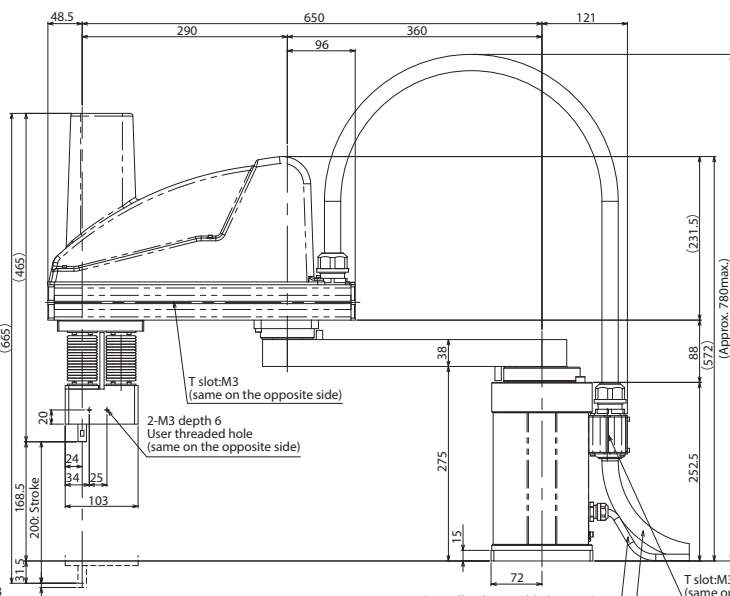
Detailed view of A



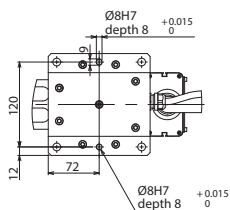
Work envelope of the right-arm system



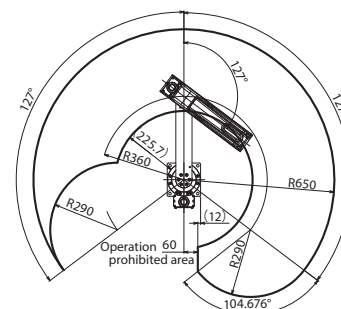
↑ Arrow view B



Controller direct cable (O.D. 23)
Motor / encoder wiring for Z axis and R axis in the second arm
Air piping for pressure adjustment in the second arm $\varnothing 6 \times 3$








Detailed view on arrow of B



Work envelope of the left-arm system

Applicable Controller

IXP series robots can operate with the following controllers. Make sure to select the model depending on the purpose.

Name	External view	Maximum number of controlled axes	Supply voltage	Control method				Max. pos. points	Standard price	Reference page
				Position	Pulse train	Program	Network *Option			
MSEL-PCX/PGX		4	Single-phase 100V ~ 230V	—	—	●	<div>   </div> <div>   </div>	30000	—	→P37