

IXP-3N1808/4N1808

Arm length
180mm

Vertical axis
80mm

■ Model Specification Items	IXP	—	N	—	1808	—	WA	—		—	P3
	Series		Number of axes 3: 3 axes 4: 4 axes	Arm length: 180mm Vertical axis: 80mm	Encoder type WA: Battery-less absolute specification	Cable length N: None P: 1m S: 3m M: 5m	X□□: Specified length R□□: Robot cable Cable length described below	Applicable controller P3: MSEL			

*Controller is not included.



POINT
Note on selection

- Refer to P. 7 for *1 through *6.
- There is a brake equipped on the vertical axis as a standard option.
- The vertical axis does not support push-motion control.
- The allowable push force should be 45N under condition of having a buffer such as a spring on a tool or the pressing side.
- Refer to P. 7 for the work envelope, and P. 8 for the notes on acceleration/deceleration setting.

Robot Specifications

Axis configuration		Arm length (mm)	Work envelope	Positioning repeatability *1	Maximum operating speed in PTP mode *2	Payload (kg) *3	
						Rated	Maximum
Axis 1	Arm 1	80	±125°	±0.01mm	2053mm/s (Composite speed)	1	3
Axis 2	Arm 2	100	±125°				
Axis 3	Vertical axis	—	80mm	±0.02mm	350mm/s		
Axis 4	Rotational axis	—	±360°	±0.01°	1200°/s		

Robot Specifications

	3-axis specification	4-axis specification
Encoder type	Battery-less absolute encoder	
User wiring	AWG26×8	
User piping	O.D. ø4, I.D. ø2.5, 2 air tubes Maximum working pressure 0.8MPa	
Standard cycle time *4 (sec)	0.57	
Allowable torque (Axis 4) (N·m)	—	0.28
Allowable moment (N·m)	0.7	
Allowable inertial moment from the tip of the vertical axis *5 (kg·m ²)	Rated 0.001 Maximum 0.01	Rated 0.001 Maximum 0.003
Ambient operating temperature/humidity	Temperature 0 ~ 40°C, Humidity 20 ~ 85%RH (Non-condensing)	
Unit weight (kg)	7	7.5

Price List

Specification	Model number	Standard price
3-axis specification	IXP-3N1808	—
4-axis specification	IXP-4N1808	—

Cable Length <Per Axis*>

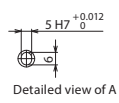
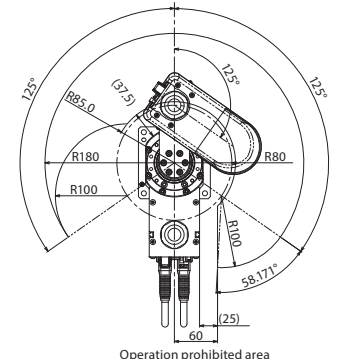
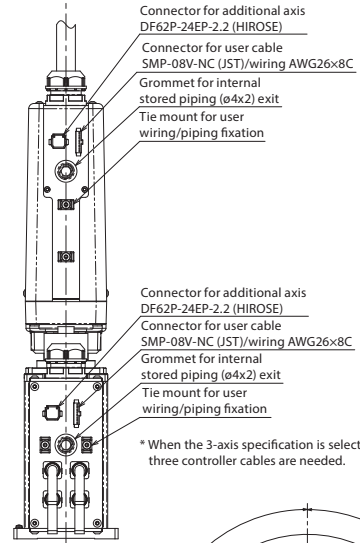
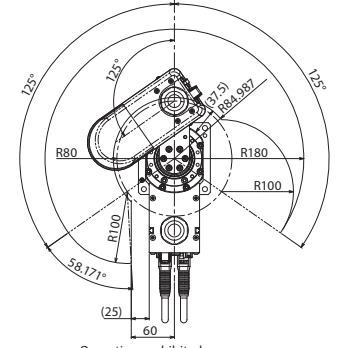
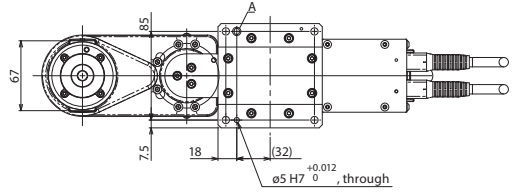
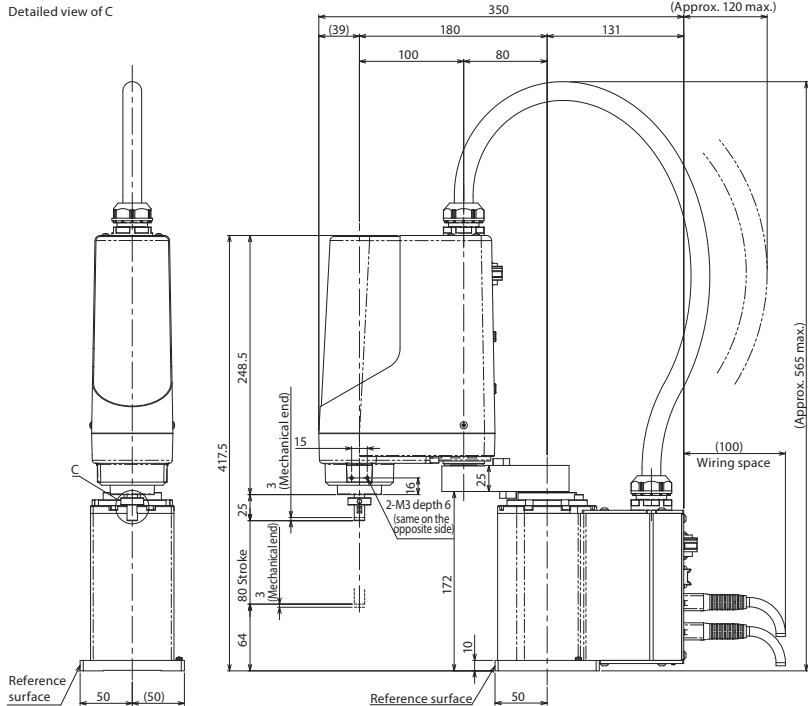
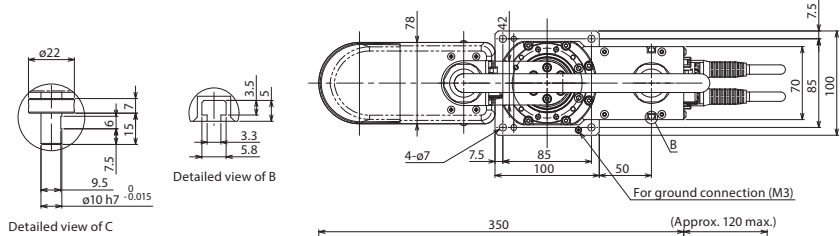
Type	Cable code	Standard price
Standard type	P (1m)	—
	S (3m)	—
	M (5m)	—
Specified length	X06 (6m) ~ X10 (10m)	—
	X11 (11m) ~ X15 (15m)	—
	X16 (16m) ~ X20 (20m)	—
Robot cable	R01 (1m) ~ R03 (3m)	—
	R04 (4m) ~ R05 (5m)	—
	R06 (6m) ~ R10 (10m)	—
	R11 (11m) ~ R15 (15m)	—
	R16 (16m) ~ R20 (20m)	—

*The 3-axis specification requires three cables, while 4-axis specification requires four cables.

Dimensions



CAD drawings can be downloaded from the website. www.intelligentactuator.com



Applicable Controller

IXP series robots can operate with the following controllers. Make sure to select the model depending on the purpose.

Name	External view	Maximum number of controlled axes	Supply voltage	Control method				Max. pos. points	Standard price	Reference page
				Position	Pulse train	Program	Network *Option			
MSEL-PCX/PGX		4	Single-phase 100V ~ 230V	-	-	•	DeviceNet CC-Link EtherNet/IP PROFINET EtherCAT	30000	-	→P37