

# IXP- 3C5520/4C5520

Clean room specification

Arm length **550**mm

Vertical axis **200**mm

■ Model Specification Items	IXP	<input type="checkbox"/>	C	55	20	—	WA	<input type="checkbox"/>	—	P3	<input type="checkbox"/>
	Series	Number of axes 3: 3 axes 4: 4 axes	Type C: Cleanroom specification	Arm length 55: 550mm	Vertical axis stroke 20: 200mm	Encoder type WA: Battery-less absolute specification	Cable length N: None P: 1m S: 3m M: 5m	X <input type="checkbox"/> : Specified length R <input type="checkbox"/> : Robot cable Cable length described below Refer to the price list.	Applicable controller P3: MSEL	Option Option below Refer to the price list	

\*Controller is not included. \* Please select VLL or VLR for suction of the L-shaped joint.



\*The photograph shows a 4-axis specification.

**POINT**  
Note on selection

- Refer to P. 7 for \*1 through \*7.
- Make sure to select the brake option when the payload is 4kg or more.
- The vertical axis does not support push-motion control.
- The allowable push force should be 90N under condition of having a buffer such as a spring on a tool or the pressing side.
- Refer to P. 7 for the work envelope, and P. 8 for the notes on acceleration/deceleration setting.

## Robot Specifications

Axis configuration		Arm length (mm)	Work envelope	Positioning repeatability *1	Maximum operating speed in PTP mode *2	Payload (kg) *3	
						Rated	Maximum
Axis 1	Arm 1	260	±127°	±0.04mm	2501mm/s (Composite speed)	2	6
Axis 2	Arm 2	290	±127°				
Axis 3	Vertical axis	—	200mm	±0.02mm	240mm/s		
Axis 4	Rotational axis	—	±360°	±0.02°	700°/s		

## Robot Specifications

	3-axis specification	4-axis specification
Encoder type	Battery-less absolute encoder	
User piping joint	One touch piping joint 1 Applicable tube O.D. ø6	
Standard cycle time *4 (sec)	0.79	
Allowable torque (Axis 4) (N-m)	—	3.06
Allowable moment (N-m)	9.4	
Allowable inertial moment from the tip of the vertical axis *5 (kg-m <sup>2</sup> )	Rated 0.01 Maximum 0.03	Rated 0.01 Maximum 0.01
Ambient operating temperature/humidity	Temperature 0 ~ 40°C Humidity 20 ~ 85%RH (Non-condensing)	
Unit weight (kg)	21	23
Piping joint for suction	One touch piping joint 3 Applicable tubes O.D. ø6	
Suction pressure	-3 ~ -5kPa	
Suction power *7	12Nℓ/min	
cleanliness class	Class10 (Fed. Std. 209D)	
	Equivalent to Class 3.5 (ISO 14644-1)	

## Option price (Standard price)

Name	Option code	Reference page	Standard price
Brake	<b>B</b>	Refer to our ROBO Cylinder General Catalog	—
L-shaped joint left side exit	<b>VLL</b>	→P5	—
L-shaped joint right side exit	<b>VLR</b>	→P5	—

\* Make sure to select this when the transported object is 4kg or more.

## Price List (Standard price)

Specification	Model number	Standard price
3-axis specification	IXP-3C5520	—
4-axis specification	IXP-4C5520	—

## Cable Length (Standard price) <Per Axis\*>

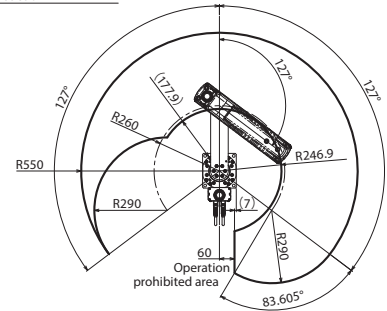
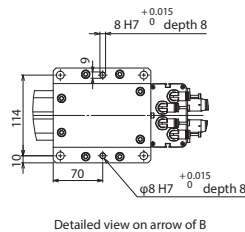
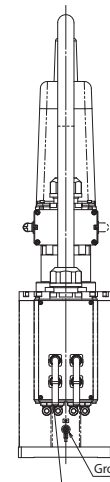
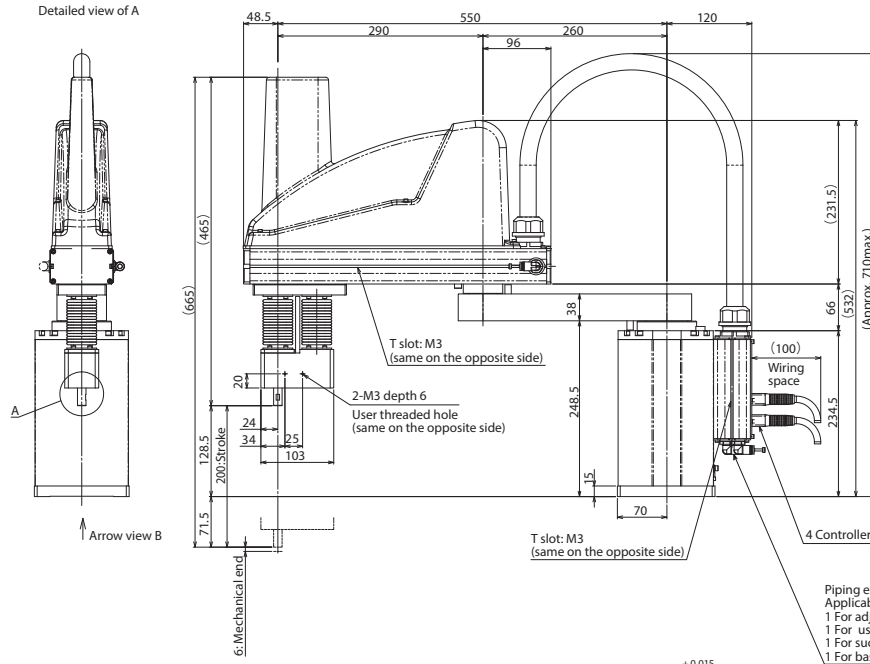
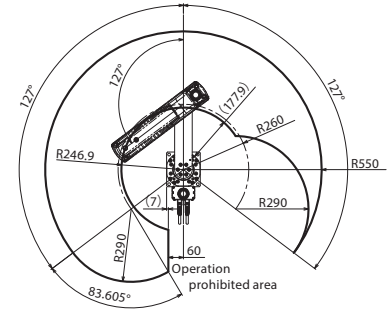
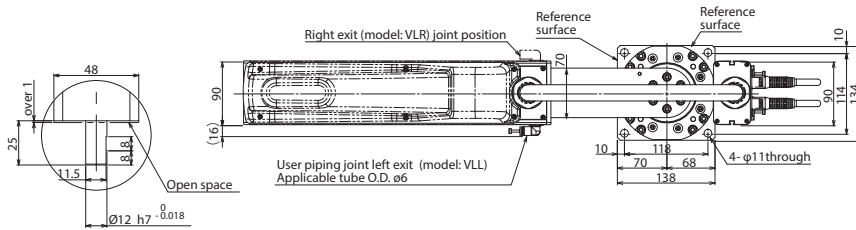
Type	Cable code	Standard price
Standard type	P (1m)	—
	S (3m)	—
	M (5m)	—
Specified length	X06 (6m) ~ X10 (10m)	—
	X11 (11m) ~ X15 (15m)	—
	X16 (16m) ~ X20 (20m)	—
Robot cable	R01 (1m) ~ R03 (3m)	—
	R04 (4m) ~ R05 (5m)	—
	R06 (6m) ~ R10 (10m)	—
	R11 (11m) ~ R15 (15m)	—
	R16 (16m) ~ R20 (20m)	—

\* The 3-axis specification requires three cables, while the gripper specification and 4-axis specification require four cables.

Dimensions



CAD drawings can be downloaded from the website. [www.intelligentactuator.com](http://www.intelligentactuator.com)



Operation prohibited area  
Work envelope of the left-arm system

Applicable Controller

IXP series robots can operate with the following controllers. Make sure to select the model depending on the purpose.

Name	External view	Maximum number of controlled axes	Supply voltage	Control method				Max. pos. points	Standard price	Reference page
				Position	Pulse train	Program	Network *Option			
MSEL-PCX/PGX		4	Single-phase 100V ~ 230V	-	-	•	DeviceNet CC-Link EtherNet/IP PROFINET EtherCAT	30000	-	→P37