

IXP-3N2508/4N2508

Arm length
250mm

Vertical axis
80mm

■ Model Specification Items	IXP	—	N	25	—	WA	—	P3
	Series	Number of axes 3: 3 axes 4: 4 axes	Arm length 25: 250mm	Vertical axis stroke 08 : 80mm 08GM : 80mm	Gripper Medium gripper installed *Refer to "Attached Gripper Types" for the types of grippers installed.	Encoder type WA: Battery-less absolute specification	Cable length N: None P: 1m S: 3m M: 5m	Applicable controller P3: MSEL

*Controller is not included.



*The photograph shows a 4-axis specification.

POINT
Note on selection

- Refer to P. 7 for *1 through *6.
- There is a brake equipped on the vertical axis as a standard option.
- The vertical axis does not support push-motion control.
- The allowable push force is 45N under condition of having a buffer such as a spring on a tool or the pressing side.
- Refer to P. 7 for the work envelope, and P. 8 for the notes on acceleration/deceleration setting.

Robot Specifications								
Axis configuration	Arm length (mm)	Work envelope	Positioning repeatability*1	Maximum operating speed in PTP mode*2		Payload (kg) *3		
				No gripper	With medium gripper (GM)	Rated	Maximum	
Axis 1	Arm 1	150	±135°	±0.02mm	2151mm/s (Composite speed)	2151mm/s (Composite speed)	1	3
Axis 2	Arm 2	100	±135°					
Axis 3	Vertical axis	—	80mm	±0.02mm	350mm/s	350mm/s	—	0.5 (Note 2)
Axis 4	Rotational axis	—	±360°	±0.01°	1200°/s	—		
	Medium gripper GM (Note 1)	—	14mm (Both fingers)	±0.01mm	—	94mm/s (One finger)		

(Note 1) Refer to the gripper selection guide in our ROBO Cylinder General Catalog.

(Note 2) This is the maximum payload on the gripper when it is attached to a SCARA Robot.

Robot Specifications			
	3-axis specification	4-axis specification	3-axis specification with medium gripper (GM)
Encoder type	Battery-less absolute encoder *		
User wiring	AWG26×8		
User piping	O.D. ø4, I.D. ø2.5, 2 air tubes Maximum working pressure 0.8MPa		
Standard cycle time *4 (sec)	0.79		0.79 (at no load on gripper)
Allowable torque (Axis 4) (N·m)	—	0.28	—
Allowable moment (N·m)	0.7		Ma, Mb, Mc : 0.7
Allowable inertial moment from the tip of the vertical axis *5 (kg·m ²)	Rated 0.001 Maximum 0.01	Rated 0.001 Maximum 0.003	Maximum 0.001
Ambient operating temperature/humidity	Temperature 0 ~ 40°C, Humidity 20 ~ 85%RH (Non-condensing)		
Unit weight (kg)	7.5	8	8

*The gripper is incremental type

Attached Gripper Types	
IXP-3N2508GM	The medium gripper RCP4-GRSML is installed at the tip of the vertical axis.

Price List		
Specification	Model number	Standard price
3-axis specification	IXP-3N2508	—
3-axis specification with medium gripper	IXP-3N2508GM	—
4-axis specification	IXP-4N2508	—

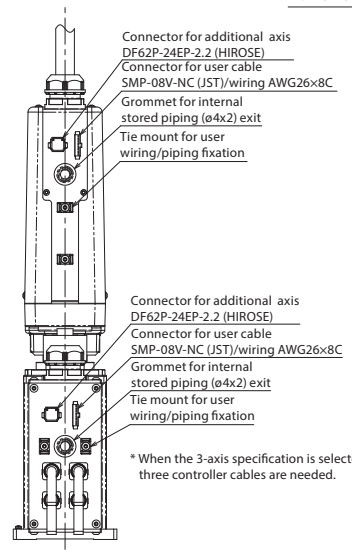
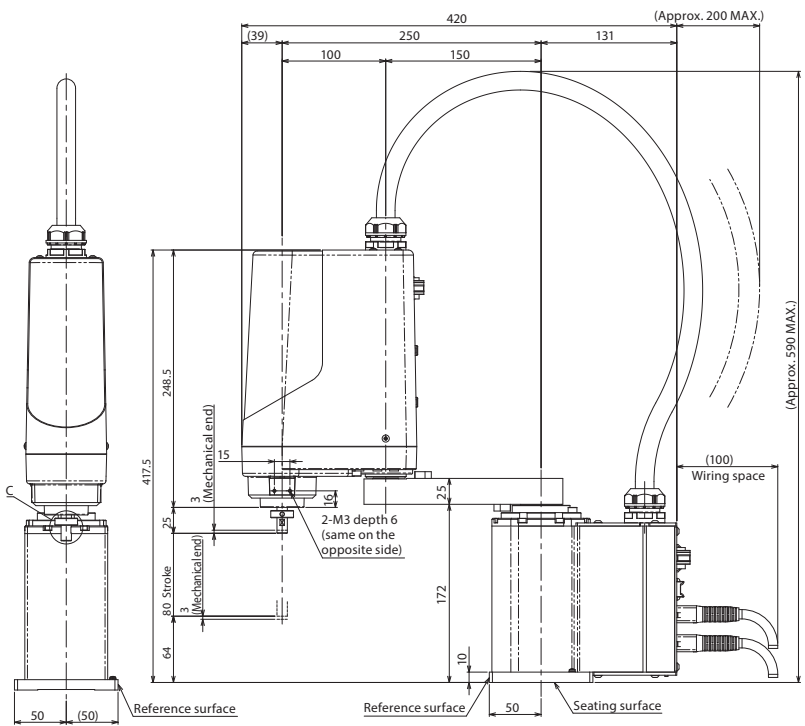
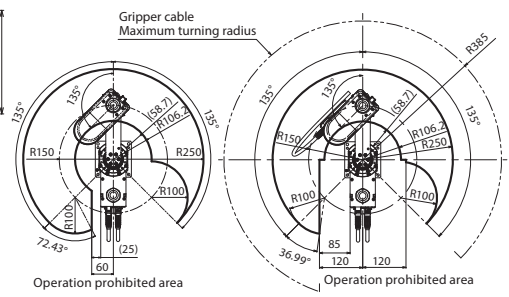
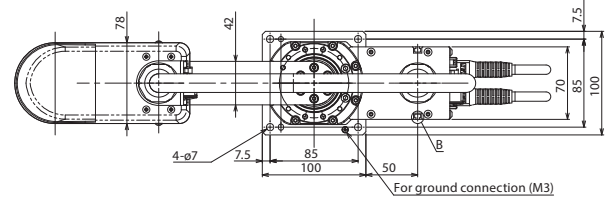
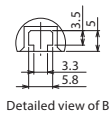
Cable Length <Per Axis*>		
Type	Cable code	Standard price
Standard type	P (1m)	—
	S (3m)	—
	M (5m)	—
Specified length	X06 (6m) ~ X10 (10m)	—
	X11 (11m) ~ X15 (15m)	—
	X16 (16m) ~ X20 (20m)	—
Robot cable	R01 (1m) ~ R03 (3m)	—
	R04 (4m) ~ R05 (5m)	—
	R06 (6m) ~ R10 (10m)	—
	R11 (11m) ~ R15 (15m)	—
	R16 (16m) ~ R20 (20m)	—

*The 3-axis specification requires three cables, while the gripper specification and 4-axis specification require four cables.

Dimensions



CAD drawings can be downloaded from the website. www.intelligentactuator.com



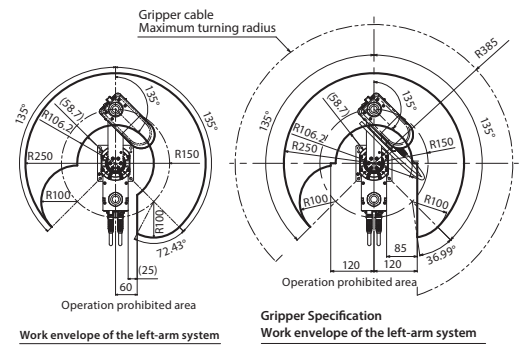
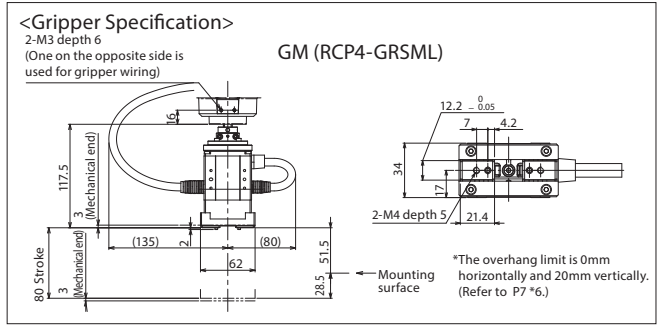
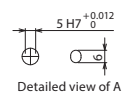
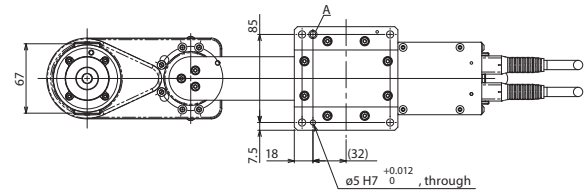
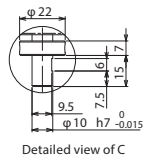
Connector for additional axis DF62P-24EP-2.2 (HIROSE)

Connector for user cable SMP-08V-NC (JST)/wiring AWG26x8C

Grommet for internal stored piping (ø4x2) exit

Tie mount for user wiring/piping fixation

* When the 3-axis specification is selected, three controller cables are needed.



Applicable Controller

IXP series robots can operate with the following controllers. Make sure to select the model depending on the purpose.

Name	External view	Maximum number of controlled axes	Supply voltage	Control method				Max. pos. points	Standard price	Reference page
				Position	Pulse train	Program	Network *Option			
MSEL-PCX/PGX		4	Single-phase 100V ~ 230V	-	-	•	DevisNet CC-Link EtherNet/IP EtherCAT	30000	-	→P37