

IX-HNN70□□[H]	Large SCARA robot, Ceiling-mount type, Arm length 700mm Vertical axis 200mm (400mm) [High-power specification]		
IX-INN70□□[H]	Large SCARA robot, Ceiling-mount inverse type, Arm length 700mm Vertical axis 200mm (400mm) [High-power specification]		
Model items IX —□NN70□□[H] — □ — T2			
Series	Type	Cable length	Applicable controller
HNN7020(7040)[H]: Ceiling-mount type Arm length 700mm, Vertical axis 200mm (400mm)	INN7020(7040)[H]: Ceiling-mount inverse type Arm length 700mm, Vertical axis 200mm (400mm)	5L : 5 m (standard) 10L: 10 m	T2: XSEL-PX/QX



*For details on the model items, refer to page 8.

Model/Specifications

Model	Axis configuration	Arm length (mm)	Motor capacity (W)	Work envelope	Positioning Repeatability (mm) (Note 1)	PTP operation Maximum operating speed (Note 2)	Standard cycle time (sec) (Note 3)	Load capacity (kg) (Note 4)		Axis 3 (vertical axis) push force (N) (Note 5)		Axis 4 allowable load		
								Rated	Maximum	Maximum limit	Minimum limit	Allowable inertial moment (kg·m ²) (Note 6)	Allowable torque (N·m)	
IX-HNN7020[H]-□-T2 (IX-HNN7040[H]-□-T2) IX-INN7020[H]-□-T2 (IX-INN7040[H]-□-T2)	Axis 1	Arm 1	350	750	±125°	6597mm/s [7010mm/s] (Composite speed)	0.50 [0.42]	5	20	265 [304]	127.3 [146.0]	0.1	6.7 [11.7]	
	Axis 2	Arm 2	350	400	±145°									±0.015 (XY)
	Axis 3	Vertical axis	-	400	200mm (400mm)	±0.010								1583mm/s [1614mm/s]
	Axis 4	Rotating axis	-	200	±360°	±0.005								1200°/s [1266°/s]

*In the model number above, specify the cable length in □. * [] indicates the high-power specification type *SCARA robots cannot operate continuously at 100% speed and acceleration. For details on the operating conditions, refer to Reference Acceleration/Deceleration Settings on page 44.

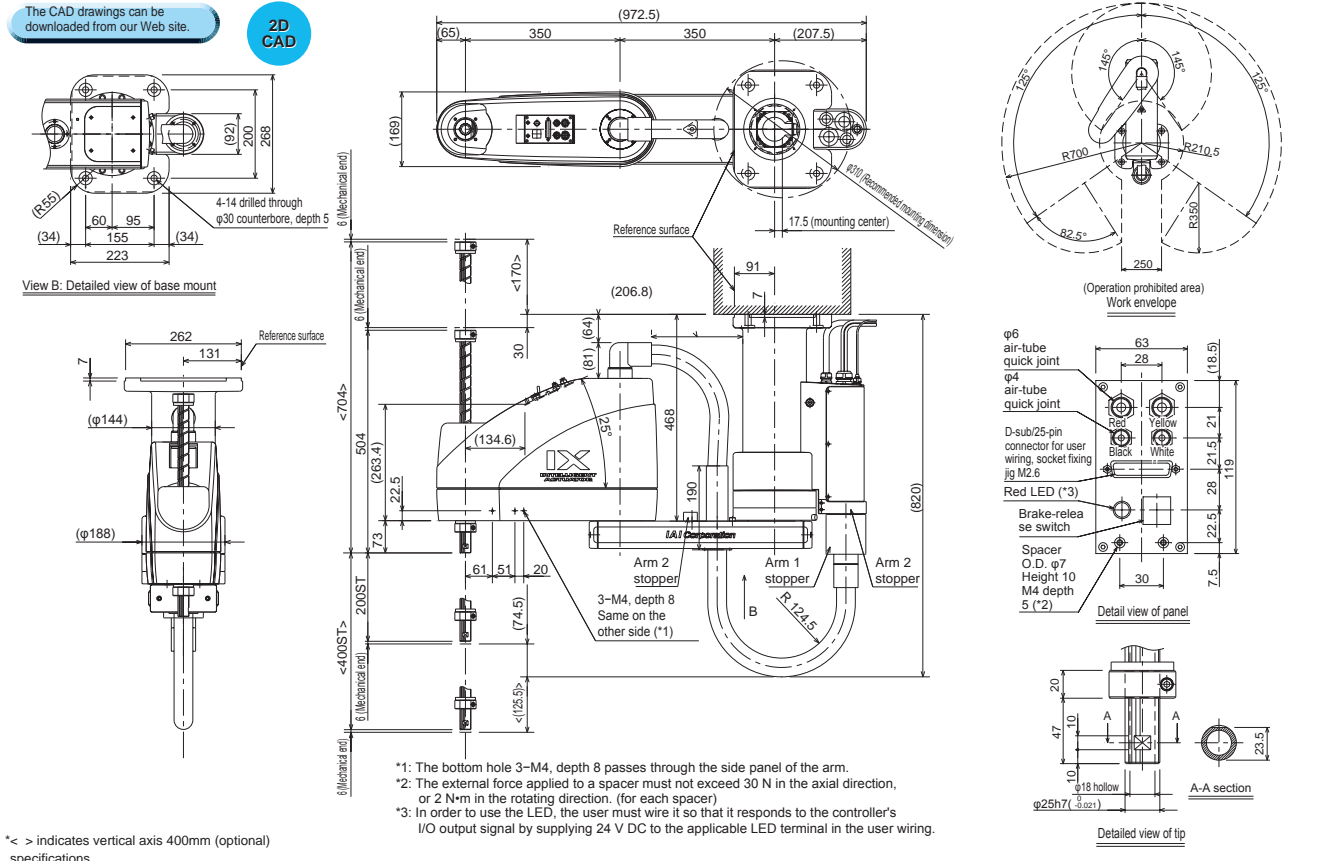
Common Specifications

Encoder type	Absolute
User wiring	25-conductor AWG26 D-sub/25-pin connector with shield (socket)
User tubing	Air tube (O.D. ø6, I.D. ø4) x 2 (Normal working pressure 0.8 MPa) Air tube (O.D. ø4, I.D. ø2.5) x 2 (Normal working pressure 0.8 MPa)
Alarm indicator (Note 7)	Small red LED indicator x 1 (24 V DC must be supplied.)
Brake-release switch (Note 8)	Allows remote release of Z-axis (24 VDC required)

Ambient temperature/humidity	Temperature: 0–40 °C, humidity: 20–85%RH or less (no condensation)
Unit weight	58Kg
Applicable controller	T2: XSEL-PX/QX
Cable length (Note 9)	5L: 5 m (standard), 10L: 10 m (optional)

Dimensions

*For the inverse type, the following illustrations should be turned upside down. (See page 2.)



* < > indicates vertical axis 400mm (optional) specifications.

Applicable Controller Specifications

Applicable Controller	Features	Maximum I/O points (inputs/outputs)	Power-supply voltage	Reference page
XSEL-PX-##-2[3]	Maximum 5 axes, 1600 [2400] W supported	192/192 points	Single-phase [Three-phase] 230 VAC	p. 37
XSEL-QX-##-2[3]	Safety Category 4 supported			

*The SCARA model with high-power specification [H] needs a 2.4 kW three-phase type controller XSEL-PX/QX-##-3.

Caution For explanations of (Note 1) through (Note 9), refer to page 7.