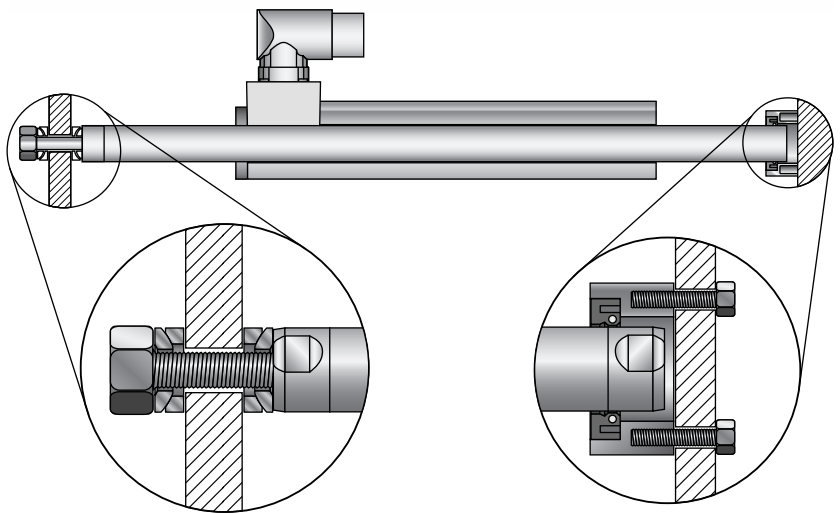


Slider Mounts

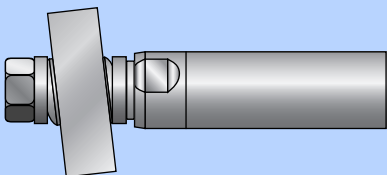
Depending on the application, LinMot linear motors can be operated with a "moving slider" or "moving stator." Applications with short stroke ranges are preferably implemented with moving sliders; applications with long strokes are better with a moving stator. In both cases, LinMot recommends the use of special mounting kits for mounting the slider, in order to avoid overdetermining the mount.

In moving slider applications, the stator is mounted, and the slider is connected to a load that is guided by a linear guide. In order to avoid alignment errors, the slider is attached to the load or guide using fixed bearings, each consisting of two rounded washers and two bevel washers.

In moving stator applications, the slider is mounted and the stator is attached to a linear guide, together with the load. In order to avoid overdetermining the slider bearing, one end of the slider is mounted on a fixed bearing, and the other on a floating bearing.

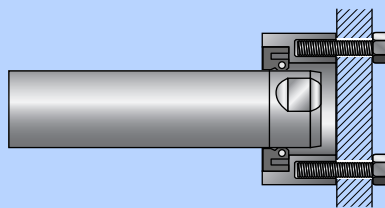


Fixed bearing



The fixed bearing consists of two rounded washers and two bevel washers. It compensates for angular and axial deflection.

Floating bearing



The slider is mounted in a rubber ring as a floating bearing. The floating bearing compensates for angular and axial displacement and length tolerance.

Material



Rounded and bevel washers:
Case-hardened steel

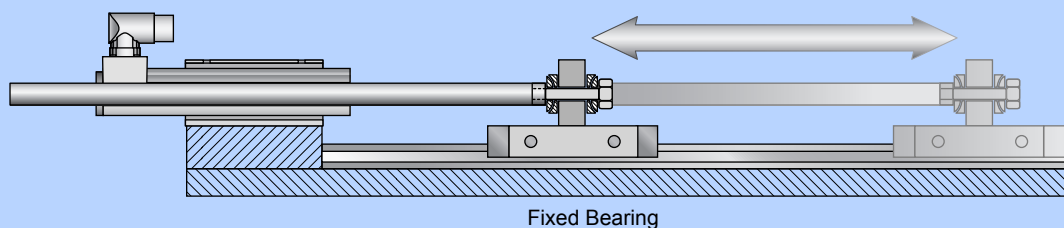


Bearing:
NBR
(Nitrile-Butadiene-Rubber with
DIN17223 spring steel)

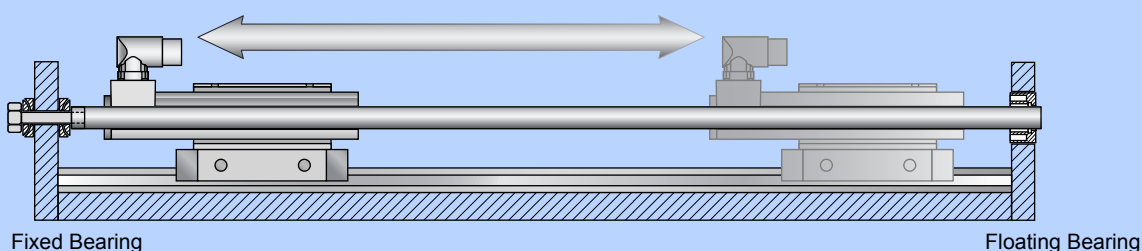


Housing:
Stainless steel 1.4305

Moving Slider



Moving Stator

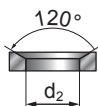


Dimensions and ordering information

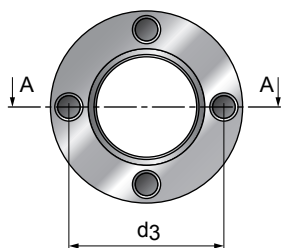
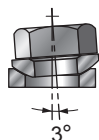
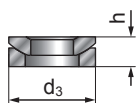
Fix Bearing



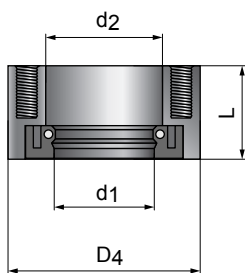
DIN 6319 C



DIN 6319 D



Floating Bearing



A-A

Item	Material	Slider	Lead	d1	d2	d3	h
PLF01-12	case-hardened steel	12mm	M5	5.2mm (0.20in)	6.0mm (0.24in)	10.5mm (0.41in)	3.2mm (0.13in)
PLF01-12-Ni	nickel-plated steel						
PLF01-20	case-hardened steel	19/20mm	M8	8.4mm (0.33in)	9.6mm (0.38in)	17mm (0.67in)	5.5mm (0.22in)
PLF01-20-SS	stainless steel 1.4301						
PLF01-28	case-hardened steel	27/28mm	M10	10.5mm (0.41in)	12mm (0.47in)	21mm (0.83in)	6.5mm (0.26in)
PLF01-28-SS	stainless steel 1.4301						

Item	Slider	Lead	d1	d2	d3	D4	L
PLL02-12	12mm	-	12mm (0.47in)	rubber-ring	-	22mm (0.87in)	7.0mm (0.28in)
PLL01-19	19mm	M5	19mm (0.75in)	23mm (0.90in)	30mm (1.18in)	37mm (1.46in)	20mm (0.79in)
PLL01-20	20mm	M5	20mm (0.79in)	23mm (0.90in)	30mm (1.18in)	37mm (1.46in)	20mm (0.79in)
PLL01-27	27mm	M5	27mm (1.06in)	32mm (1.26in)	40mm (1.57in)	48mm (1.89in)	20mm (0.79in)
PLL01-28	28mm	M5	28mm (1.10in)	32mm (1.26in)	40mm (1.57in)	48mm (1.89in)	20mm (0.79in)

Item	Description	Part Number
PLF01-12	Fixed End Washer set for 12mm sliders	0150-3085
PLF01-12-Ni	Fixed End Washer set for 12mm sliders, nickel-plated	0150-3573
PLF01-20	Fixed End Washer set for 19/20mm sliders	0150-3083
PLF01-20-SS	Fixed End Washer set for 19/20mm sliders, SS	0150-3296
PLF01-28	Fixed End Washer set for 27/28mm sliders	0150-3087
PLF01-28-SS	Fixed End Washer set for 27/28mm sliders, SS	0150-3297
PLL02-12	Floating bearing for PL01-12 slider	0150-3111
PLL01-19	Floating bearing for PL01-19 slider	0150-3335
PLL01-20	Floating bearing for PL01-20 slider	0150-3084
PLL01-27	Floating bearing for PL01-27 slider	0150-3294
PLL01-28	Floating bearing for PL01-28 slider	0150-3094
PLM01-20-MK	Mounting kit for PL01-20 slider	0150-3079
PLM01-28-MK	Mounting kit for PL01-28 slider	0150-3095